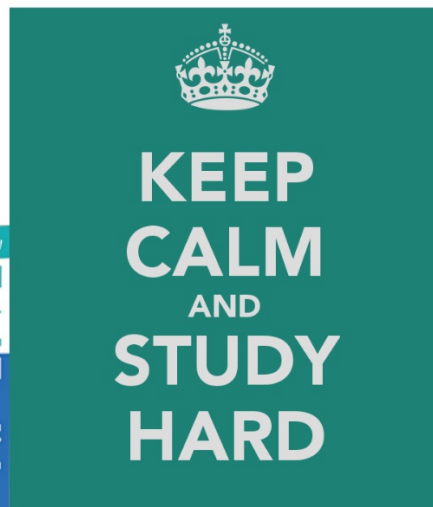


Wednesday 9th December 2015

Welcome to the English Course
New Total English A2-Unit 10 (2/3)



False Friends
Urban Words

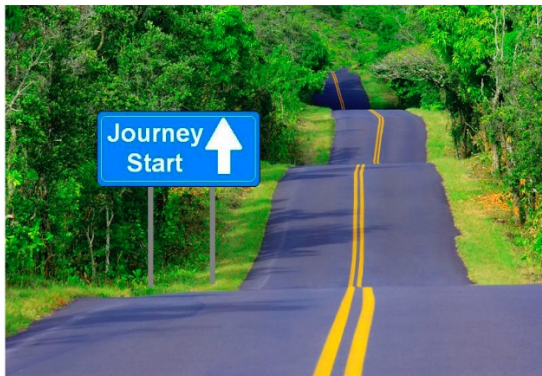


Emir Livadić ©

False Friends

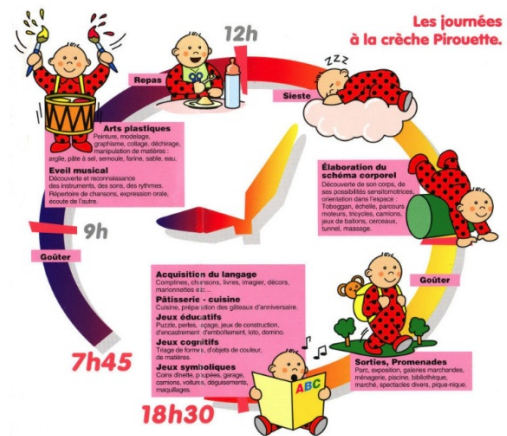
What's a false friend?

It's a pair of words in two languages that look and sound similar, but differ significantly in meaning.



a journey
un trajet (pendulaire, écolier, etc.), un voyage

≠



une journée
a day

Other English and French False Friends (1)



≠



a library
une bibliothèque

une libraire
a bookshop



≠



a coin
une pièce (de monnaie)

un coin
a corner

Other English and French False Friends (2)



excited
enthusiastic

≠



excité(e)
aroused



a photograph
une photo(graphie)

≠



un photographe
a photographer

A Famous English Expression



Don't judge an "English word" by its "resemblance to French"

Urban Words



It's a car park sign. ✓

parking ✗



It's a **crowd**. (noun)
It's **crowded**. (adjective)



Brixton is a suburb of London.



People from suburbs **commute** every day to the city centre. (verb)
They're **commuters**. (noun)

DID
YOU
KNOW



In Japan, during the rush hour, there are **train pushers** to help passengers or commuters to get onto the trains.
Train pusher is well and truly a job!

Ask questions to your partner and tell the class about him/her.



Do you travel to work/college **by** car, **by** bus, **by** train or **on** foot?

How long does it take to travel to work/college?

What is the fastest means of transport to go to work/college?



Means of Transport

air

land

water